

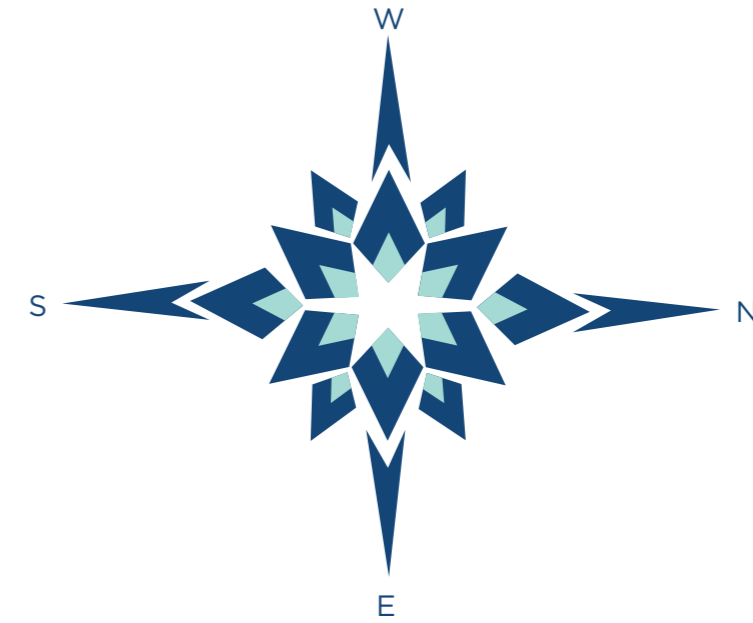


Site Address: 88A, BL Saha Road, Tollygunge, Kolkata 700053
Enquiries: +91 80660 84661 | www.morya.info
Morya Phase 1 HIRA Registration No: HIRA/P/SOU/2018/000028

CO-OWNERS & DEVELOPERS



CO-OWNER



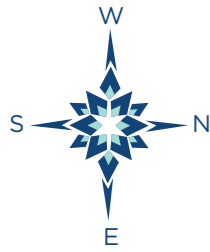
FLOOR PLANS

Disclaimer: You can also access the details on the WBHIRA website on the following link: www.hira.wb.gov.in MORYA - PHASE I is developed by Sugam Diamond Abasan LLP. Four Blocks, namely, Block A-3, A-4, B-1 and B-2 are registered with the WB Housing Industry Regulation Authority (WBHIRA) and details of the same are available at www.hira.wb.gov.in as well as our website www.morya.info. Customers are requested to visit the said link for details and update themselves with all the necessary details in respect of the project from time to time. Maps may not be to scale and distances are as available on Google Maps. All dimensions mentioned in the drawings may vary / differ due to construction contingencies, construction variances, site conditions and changes required by regulatory authorities. Specifications, amenities, information, images, visuals shown in this promotional document is/are indicative of the envisaged development and are subject to approvals.

Actual Photo: The images marked as "actual photo", are actual photographs of the dream flat merged with actual drone views from the site.

Rendered Image: Images marked as "Rendered Image" are only indicative. The Developer reserves rights to make additions, deletions, alterations or amendments as and when it deems fit and proper.

The views depicted in the pictures are as presently available from some specific flats and they may vary over period of time for reasons beyond the control of the Promoter. The view/s may not be available from all the flats in the Project and customers will need to apprise themselves on the views available from the flat/apartment of your choice. All intending Allottee/s are bound to inspect and apprise themselves of all plans and approvals and other relevant information prior to making any purchase decisions and nothing in this promotional document or other documents is intended to substitute the actual plans and approvals obtained from time to time. The picture of the proposed Residential Flat is of a specific configuration showcasing the interior layout. The common layout amenities will be developed and delivered along with MORYA - Phase II. Project is funded by Tata Capital Housing Finance Limited.



**1ST FLOOR
BLOCK A1**

Flat No.	HIRA Carpet Area (sq. ft.)	Balcony Area (sq. ft.)	Terrace Area (sq. ft.)
A	1202	47	1218
B	949	40	304
C	949	40	203
D	1411	52	966
E	1643	57	883

FLAT TYPE A
3 BEDROOMS + STUDY
3 TOILETS

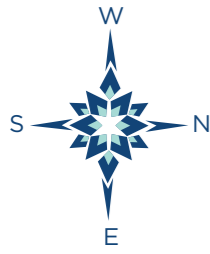
FLAT TYPE B
3 BEDROOMS
2 TOILETS

FLAT TYPE C
3 BEDROOMS
2 TOILETS

FLAT TYPE D
4 BEDROOMS + MAID'S
3 TOILETS

FLAT TYPE E
4 BEDROOMS + MAID'S
4 TOILETS





**2ND FLOOR
BLOCK A1**

Flat No.	HIRA Carpet Area (sq. ft.)	Balcony Area (sq. ft.)	Terrace Area (sq. ft.)
A	1202	47	-
B	949	40	-
C	949	40	-
D	1411	52	-
E	1643	57	-

FLAT TYPE A
3 BEDROOMS + STUDY
3 TOILETS

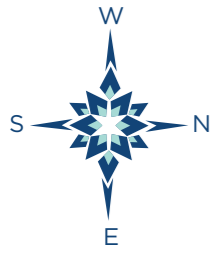
FLAT TYPE B
3 BEDROOMS
2 TOILETS

FLAT TYPE C
3 BEDROOMS
2 TOILETS

FLAT TYPE D
4 BEDROOMS + MAID'S
3 TOILETS

FLAT TYPE E
4 BEDROOMS + MAID'S
4 TOILETS





**3RD, 6TH, 9TH, 12TH & 15TH FLOOR
BLOCK A1**

Flat No.	HIRA Carpet Area (sq. ft.)	Balcony Area (sq. ft.)	Terrace Area (sq. ft.)
A	1202	47	83
B	949	40	-
C	949	40	-
D	1411	52	65
E	1643	57	86

FLAT TYPE A
3 BEDROOMS + STUDY
3 TOILETS

FLAT TYPE B
3 BEDROOMS
2 TOILETS

FLAT TYPE C
3 BEDROOMS
2 TOILETS

FLAT TYPE D
4 BEDROOMS + MAID'S
3 TOILETS

FLAT TYPE E
4 BEDROOMS + MAID'S
4 TOILETS





**4TH, 7TH, 10TH, 13TH & 16TH FLOOR
BLOCK A1**

Flat No.	HIRA Carpet Area (sq. ft.)	Balcony Area (sq. ft.)	Terrace Area (sq. ft.)
A	1202	47	72
B	949	40	-
C	949	40	-
D	1411	52	81
E	1643	57	79

FLAT TYPE A
3 BEDROOMS + STUDY
3 TOILETS

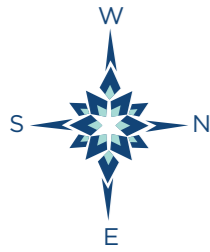
FLAT TYPE B
3 BEDROOMS
2 TOILETS

FLAT TYPE C
3 BEDROOMS
2 TOILETS

FLAT TYPE D
4 BEDROOMS + MAID'S
3 TOILETS

FLAT TYPE E
4 BEDROOMS + MAID'S
4 TOILETS





**5TH, 8TH, 11TH, 14TH FLOOR
BLOCK A1**

Flat No.	HIRA Carpet Area (sq. ft.)	Balcony Area (sq. ft.)	Terrace Area (sq. ft.)
A	1202	47	88
B	949	40	-
C	949	40	-
D	1411	52	78
E	1643	57	72

FLAT TYPE A
3 BEDROOMS + STUDY
3 TOILETS

FLAT TYPE B
3 BEDROOMS
2 TOILETS

FLAT TYPE C
3 BEDROOMS
2 TOILETS

FLAT TYPE D
4 BEDROOMS + MAID'S
3 TOILETS

FLAT TYPE E
4 BEDROOMS + MAID'S
4 TOILETS





**17TH FLOOR (DUPLIX)
BLOCK A1**

Flat No.	HIRA Carpet Area (sq. ft.)	Balcony Area (sq. ft.)	Terrace Area (sq. ft.)
A	1966	19	308
B	1766	-	89
C	1766	-	89
D	2323	-	519
E	1643	57	72

FLAT TYPE A
5 BEDROOMS + MAID's
5 TOILETS
DUPLIX (LEVEL 1)

FLAT TYPE B
5 BEDROOMS +
4 TOILETS
DUPLIX (LEVEL 1)

FLAT TYPE C
5 BEDROOMS +
4 TOILETS
DUPLIX (LEVEL 1)

FLAT TYPE D
5 BEDROOMS + MAID's
5 TOILETS
DUPLIX (LEVEL 1)

FLAT TYPE E
4 BEDROOMS + MAID's
4 TOILETS





**18TH FLOOR
BLOCK A1**

Flat No.	HIRA Carpet Area (sq. ft.)	Balcony Area (sq. ft.)	Terrace Area (sq. ft.)
A	-	-	-
B	-	-	-
C	-	-	-
D	-	-	-
E	1643	57	86

FLAT TYPE A
5 BEDROOMS + MAID's
5 TOILETS
DUPLEX (LEVEL 2)

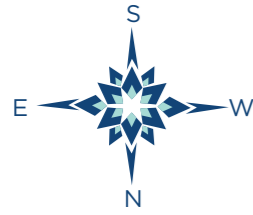
FLAT TYPE B
5 BEDROOMS +
4 TOILETS
DUPLEX (LEVEL 2)

FLAT TYPE C
5 BEDROOMS +
4 TOILETS
DUPLEX (LEVEL 2)

FLAT TYPE D
5 BEDROOMS + MAID's
5 TOILETS
DUPLEX (LEVEL 2)

FLAT TYPE E
4 BEDROOMS + MAID's
4 TOILETS





**1ST FLOOR
BLOCK A2**

Flat No.	HIRA Carpet Area (sq. ft.)	Balcony Area (sq. ft.)	Terrace Area (sq. ft.)
A	1202	47	1409
B	949	40	304
C	949	40	205
D	1411	52	951
E	1643	57	883

FLAT TYPE D
4 BEDROOMS + MAID'S
3 TOILETS

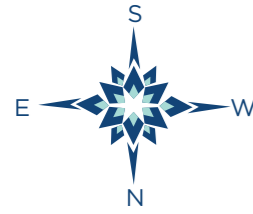
FLAT TYPE C
3 BEDROOMS
2 TOILETS

FLAT TYPE B
3 BEDROOMS
2 TOILETS

FLAT TYPE A
3 BEDROOMS + STUDY
3 TOILETS

FLAT TYPE E
4 BEDROOMS + MAID'S
4 TOILETS





**2ND FLOOR
BLOCK A2**

Flat No.	HIRA Carpet Area (sq. ft.)	Balcony Area (sq. ft.)	Terrace Area (sq. ft.)
A	1202	47	-
B	949	40	-
C	949	40	-
D	1411	52	-
E	1643	57	-

FLAT TYPE D
4 BEDROOMS + MAID'S
3 TOILETS

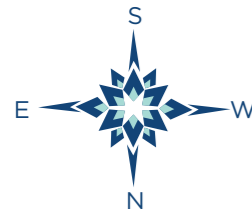
FLAT TYPE C
3 BEDROOMS
2 TOILETS

FLAT TYPE B
3 BEDROOMS
2 TOILETS

FLAT TYPE A
3 BEDROOMS + STUDY
3 TOILETS

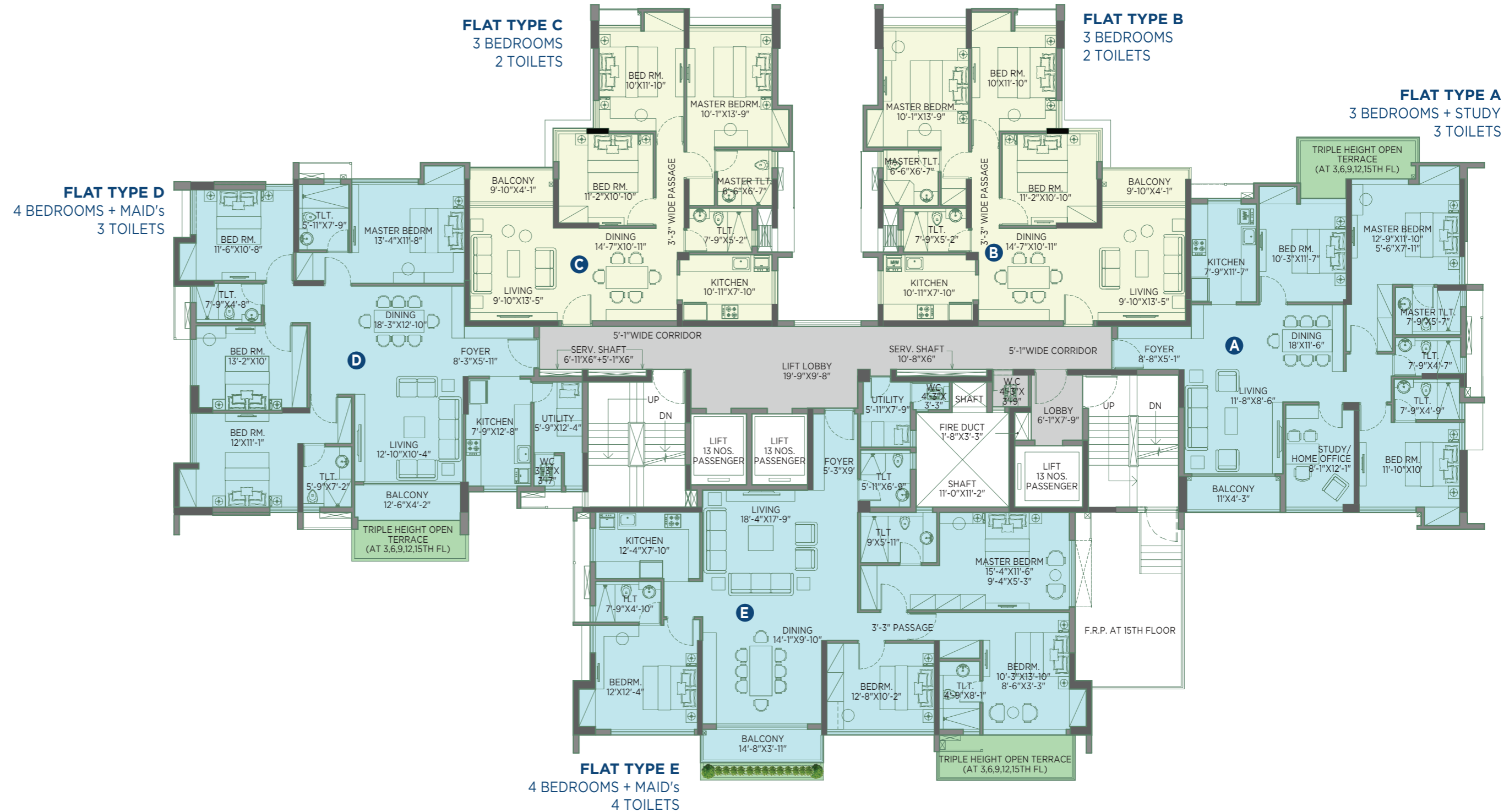


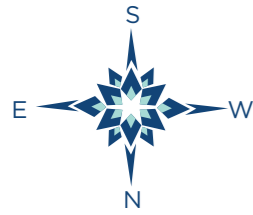
FLAT TYPE E
4 BEDROOMS + MAID'S
4 TOILETS



**3RD, 6TH, 9TH, 12TH & 15TH FLOOR
BLOCK A2**

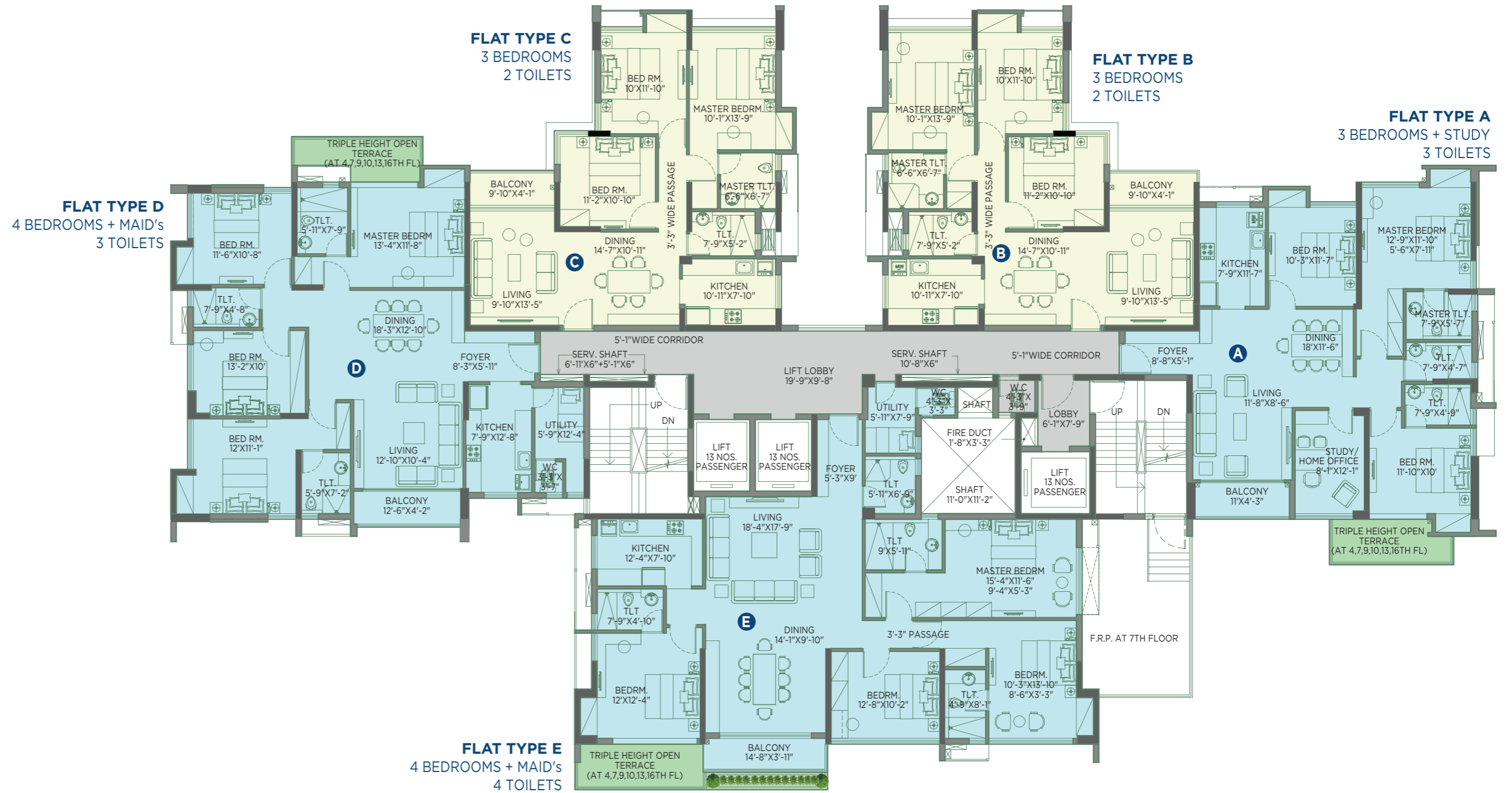
Flat No.	HIRA Carpet Area (sq. ft.)	Balcony Area (sq. ft.)	Terrace Area (sq. ft.)
A	1202	47	83
B	949	40	-
C	949	40	-
D	1411	52	65
E	1643	57	86

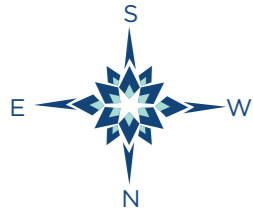




**4TH, 7TH, 10TH, 13TH & 16TH FLOOR
BLOCK A2**

Flat No.	HIRA Carpet Area (sq. ft.)	Balcony Area (sq. ft.)	Terrace Area (sq. ft.)
A	1202	47	72
B	949	40	-
C	949	40	-
D	1411	52	81
E	1643	57	79

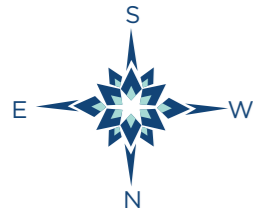




**5TH, 8TH, 11TH & 14TH FLOOR
BLOCK A2**

Flat No.	HIRA Carpet Area (sq. ft.)	Balcony Area (sq. ft.)	Terrace Area (sq. ft.)
A	1202	47	88
B	949	40	-
C	949	40	-
D	1411	52	78
E	1643	57	72





**17th FLOOR (DUPLIX)
BLOCK A2**

Flat No.	HIRA Carpet Area (sq. ft.)	Balcony Area (sq. ft.)	Terrace Area (sq. ft.)
A	1966	19	308
B	1766	-	89
C	1766	-	86
D	2323	-	519
E	1643	57	72

FLAT TYPE D
5 BEDROOMS + MAID'S
5 TOILETS
DUPLIX (LEVEL 1)

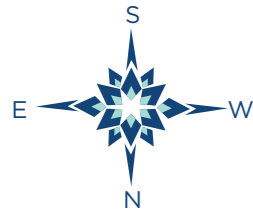
FLAT TYPE C
5 BEDROOMS +
4 TOILETS
DUPLIX (LEVEL 1)

FLAT TYPE B
5 BEDROOMS +
4 TOILETS
DUPLIX (LEVEL 1)

FLAT TYPE A
5 BEDROOMS + MAID'S
5 TOILETS
DUPLIX (LEVEL 1)

FLAT TYPE E
4 BEDROOMS + MAID'S
4 TOILETS





**18TH FLOOR
BLOCK A2**

Flat No.	HIRA Carpet Area (sq. ft.)	Balcony Area (sq. ft.)	Terrace Area (sq. ft.)
A	-	-	-
B	-	-	-
C	-	-	-
D	-	-	-
E	1643	57	86

FLAT TYPE D
5 BEDROOMS + MAID'S
5 TOILETS
DUPLEX (LEVEL 2)

FLAT TYPE C
5 BEDROOMS +
4 TOILETS
DUPLEX (LEVEL 2)

FLAT TYPE B
5 BEDROOMS +
4 TOILETS
DUPLEX (LEVEL 2)

FLAT TYPE A
5 BEDROOMS + MAID'S
5 TOILETS
DUPLEX (LEVEL 2)

FLAT TYPE E
4 BEDROOMS + MAID'S
4 TOILETS

